

# Anti-Vandal Seat

Product Code: WYVMS6



Height	750mm
Length	1950mm
Depth	320mm
Weight	55 kg
Construction Material	Galvanised Steel

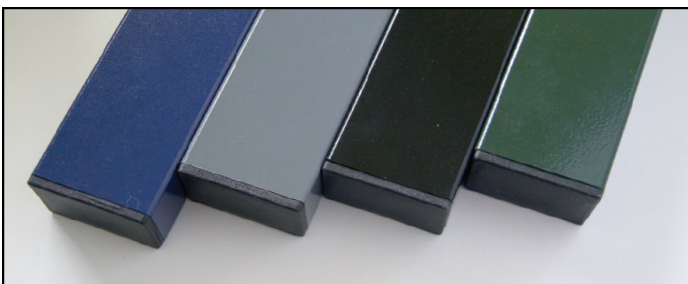
The Anti-vandal seat is manufactured using powder coated galvanised steel and is ideal for use in schools, high streets, parks and green spaces.

The seat can be powder coated in a choice of colours and the end of each slat features a plastic bung to keep out water and dirt. Alternatively welded box section end caps are available if required.

To prevent skate boarders using the seat to perform tricks, anti-skate nodules can be added to the sides of the seat.

The feet come pre-drilled ready for ground fixing using RAWL bolts or the seat can be supplied with extended legs for concreting directly into the ground.

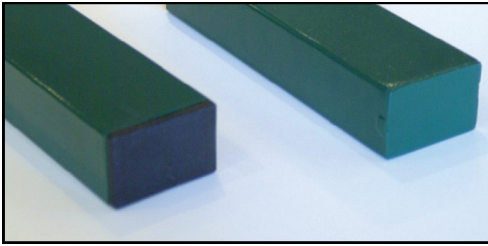
# Steel Colours



The seat is powder coated in one of our standard textured paints free of charge.

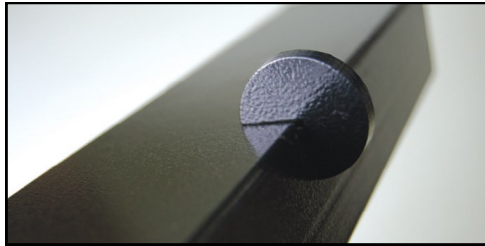
If you require a colour that is not among our standard colours, please contact us as more colours are available upon request.

# Optional Extras



## **Welded Box Section Ends**

An alternative to the standard plastic bungs.



## **Anti-Skate Nodules**

Anti-skate nodules can be added to the steel benches. The nodules are added to the sides of the seats to prevent skateboarders using the bench to perform tricks.



Kingfisher Direct Limited, Unit 12, Retford Enterprise Centre

Randall Way, Retford, Nottinghamshire, DN22 7GR

Tel: 01777 858009 Fax: 01777 858010