

Anti-Vandal Picnic Table

Product Code: WYVMP6



Height	730mm
Length	1950mm
Depth	1400mm
Weight	150 kg
Construction Material	Galvanised Steel

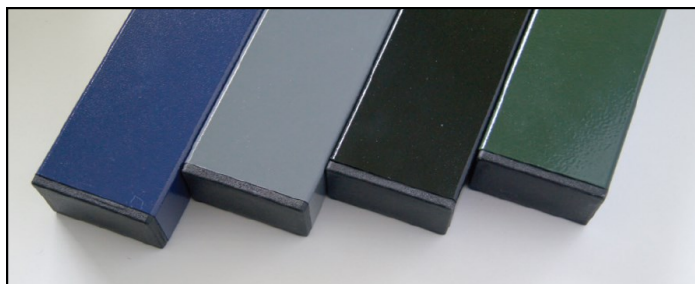
The Anti-vandal picnic table is manufactured using powder coated galvanised steel and is ideal for use in schools, parks and green spaces and it can comfortably accommodate 6 people.

The unit can be powder coated in a choice of colours and the end of each slat features a plastic bung to keep out water and dirt. Alternatively welded box section end caps are available if required.

To prevent skate boarders using the seat to perform tricks, anti-skate nodules can be added to the sides of the seat. Another popular option is the twin stainless steel ashtrays

The feet come pre-drilled ready for ground fixing using RAWL bolts or the picnic table can be supplied with extended legs for concreting directly into the ground.

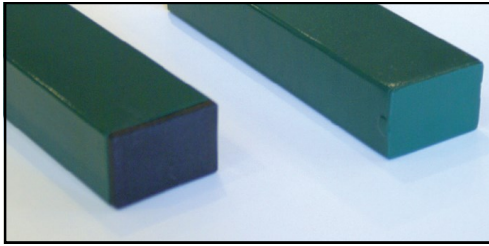
Steel Colours



The picnic table is powder coated in one of our standard textured paints free of charge.

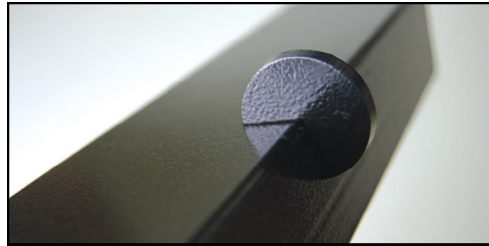
If you require a colour that is not among our standard colours, please contact us as more colours are available upon request.

Optional Extras



Welded Box Section Ends

An alternative to the standard plastic bungs.



Anti-Skate Nodules

Anti-skate nodules can be added to the steel benches. The nodules are added to the sides of the seats to prevent skate boarders using the bench to perform tricks.



Twin Ashtrays

Twin stainless steel ashtray top integrated into the top of the picnic table.



Kingfisher Direct Limited, Unit 12, Retford Enterprise Centre

Randall Way, Retford, Nottinghamshire, DN22 7GR

Tel: 01777 858009 Fax: 01777 858010