

Optio Salt Spreader

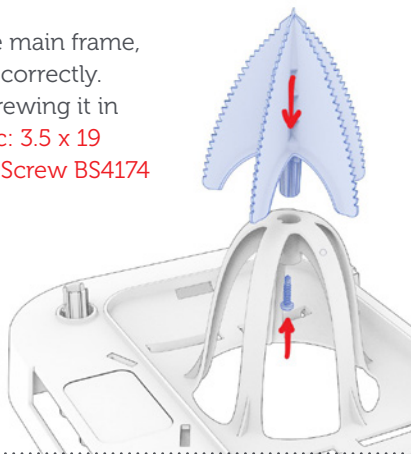
Assembly

Instructions



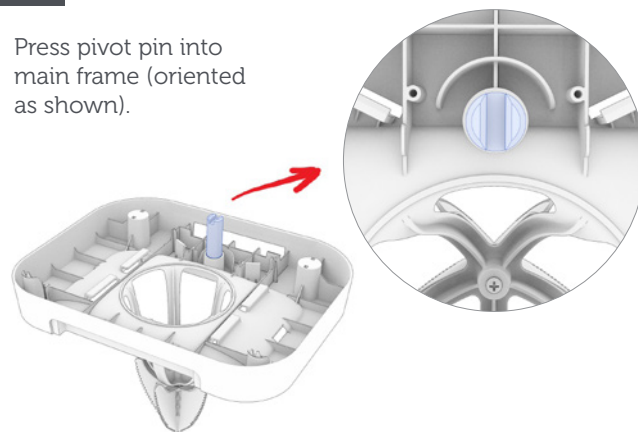
1

Insert the spike into the main frame, making sure it is keyed correctly. Secure it in place by screwing it in from below (screw spec: 3.5 x 19 Flange AB Self Tapping Screw BS4174 A2 Stainless Steel).



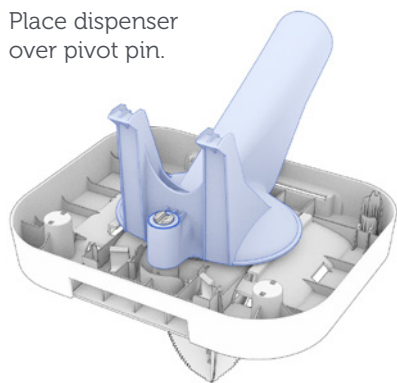
2

Press pivot pin into main frame (oriented as shown).



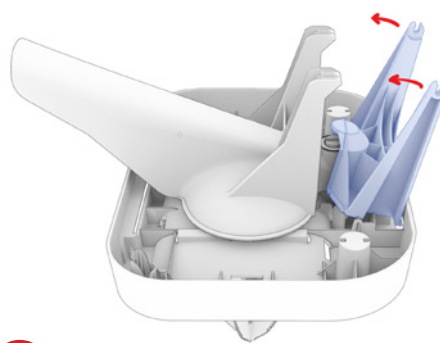
3

Place dispenser over pivot pin.

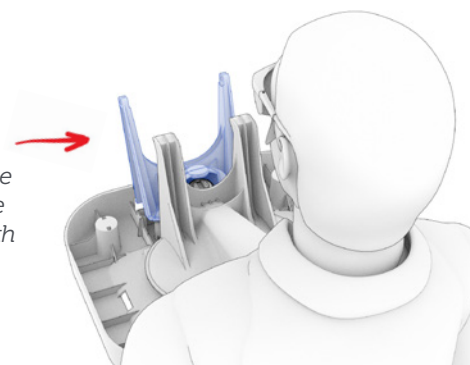


4

Fit the mechanical chassis over the pivot pin (oriented as shown).

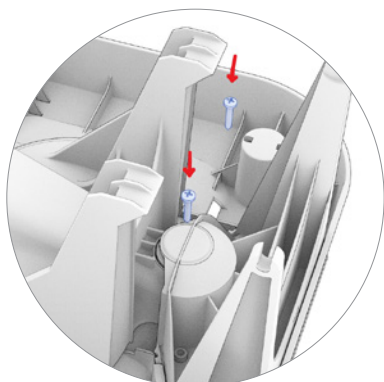


A good technique is to place the main frame on the edge of a table / flat surface and orientate it as shown below. Pull the mechanical chassis towards yourself with both hands. To aid the process you can use your torso to push the edge of the scoop up ever so slightly.



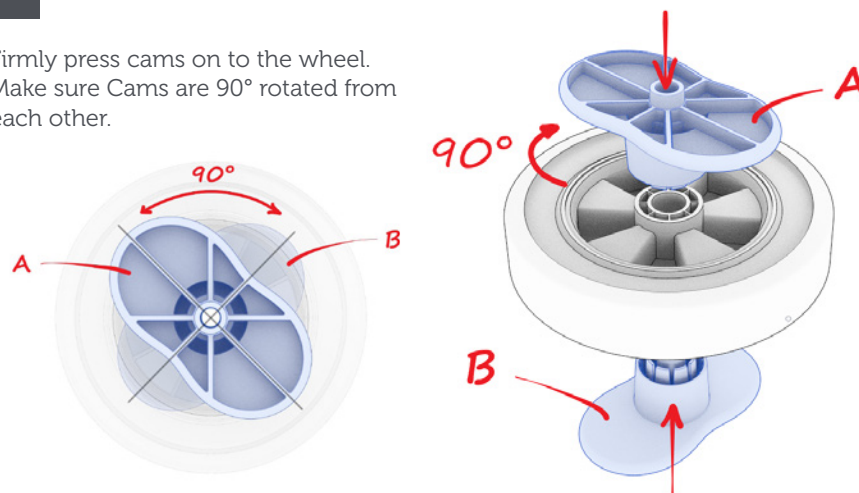
5

Secure the mechanical chassis in place with the self-tapping screws (screw spec: 3.5 x 19 Flange AB Self Tapping Screw BS4174 A2 Stainless Steel).



6

Firmly press cams on to the wheel. Make sure Cams are 90° rotated from each other.



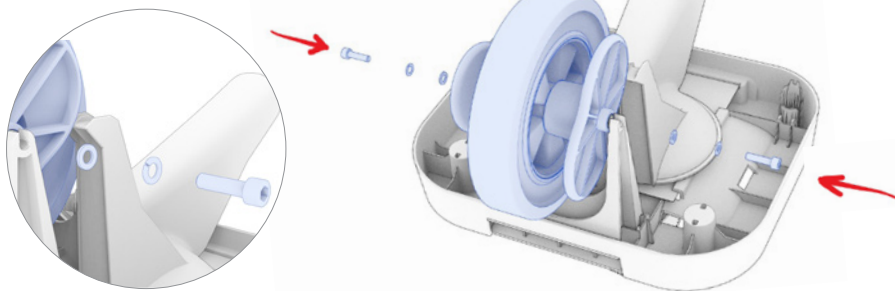
7

Insert axle into wheel assembly.



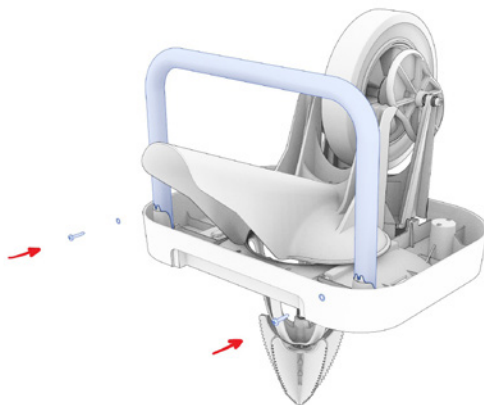
8

Insert wheel assembly into chassis and bolt into place (M6 x 22 bolts, M6 spring washers and M6 washers).



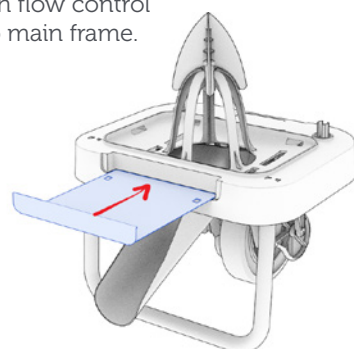
9

Press fit legs into main frame. Once they are pressed in secure them in place by screwing them in as shown. Make sure to use the external toothed shakeproof washers as shown (screw spec: 3.5 x 19 Flange AB Self Tapping Screw BS4174 A2 Stainless Steel).



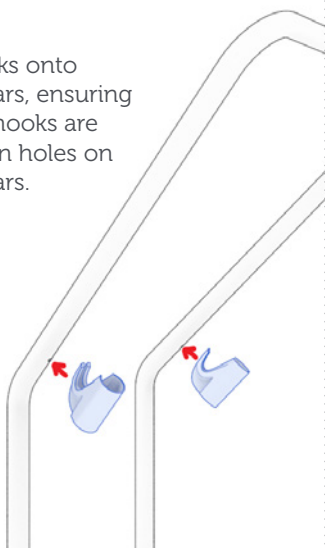
10

Push flow control into main frame.



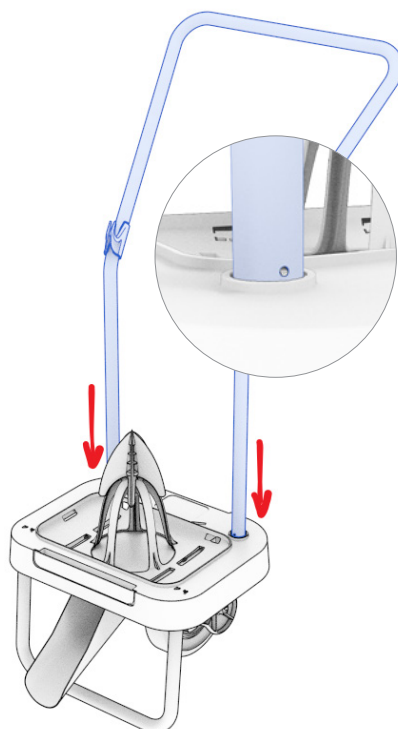
11

Clip hooks onto handlebars, ensuring pins on hooks are located in holes on handlebars.

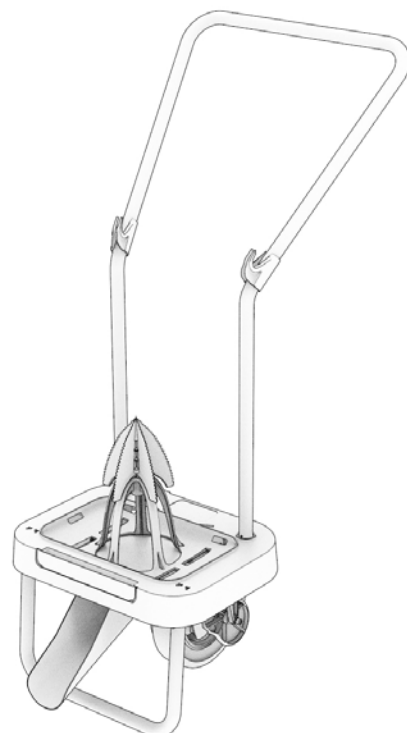


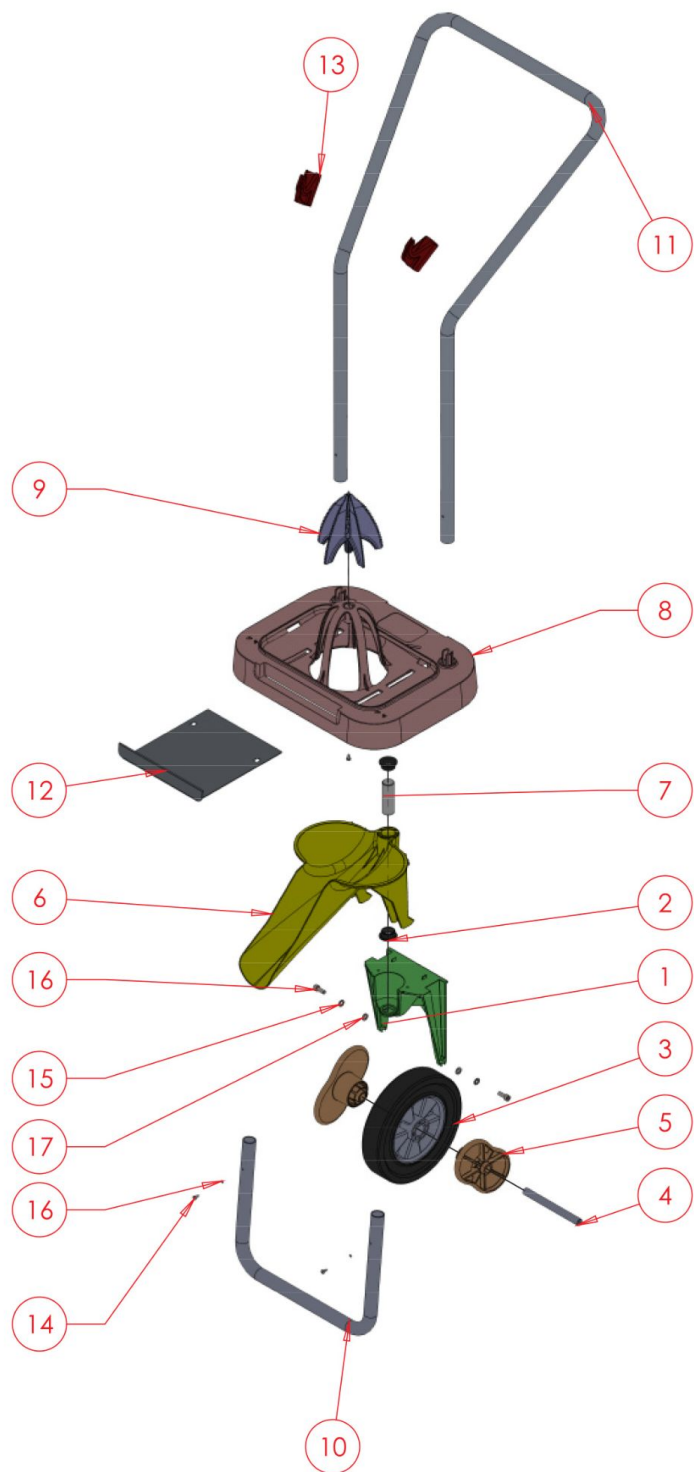
12

Press handlebars into main frame, ensuring pins are located in holes on handlebars.



Finished Assembly





Item No.	Part Number	Description
1	5717 - 0001	Mechanical Chassis
2	IGUS JFM_2023_11_1	IGUS BUSH
3	Solid Rubber Wheel - 808R650P	200mm Solid Rubber Wheel
4	5717 - 0004	Axle
5	5717 - 0003	Cam 2:1 Ratio
6	5717 - 0005	Salt Dispenser
7	5717 - 0006	Pivot Pin 20di x 60
8	5717 - 0007	Main Frame
9	5717 - 0008	Spike Bottom and Top
10	5717 - 0010	Lower Legs
11	5717 - 0011	Handle Structure
12	5717 - 0012	Flow Control Slider
13	5717 - 0013	Bag Hook
14	Tapping screw DIN 7049-ST3.5x9.5-C-H-N	3.5 x 19mm Self Tapping Screws
15	Rectangular section spring washer BS 4464 - 6 (Type B)	M6 Spring Washer
16	ISO 4762 M6x16 - 16N	M6 x 22 Socket Head Cap Screw
17	Washer ISO 7089 - 6	M6 x 1.6 Washer