

Leaffield Environmental Ltd.

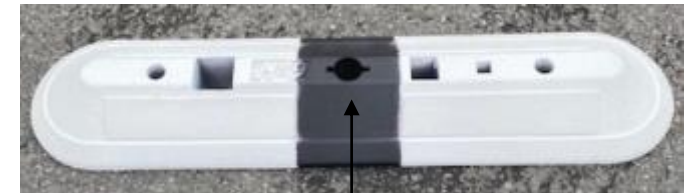
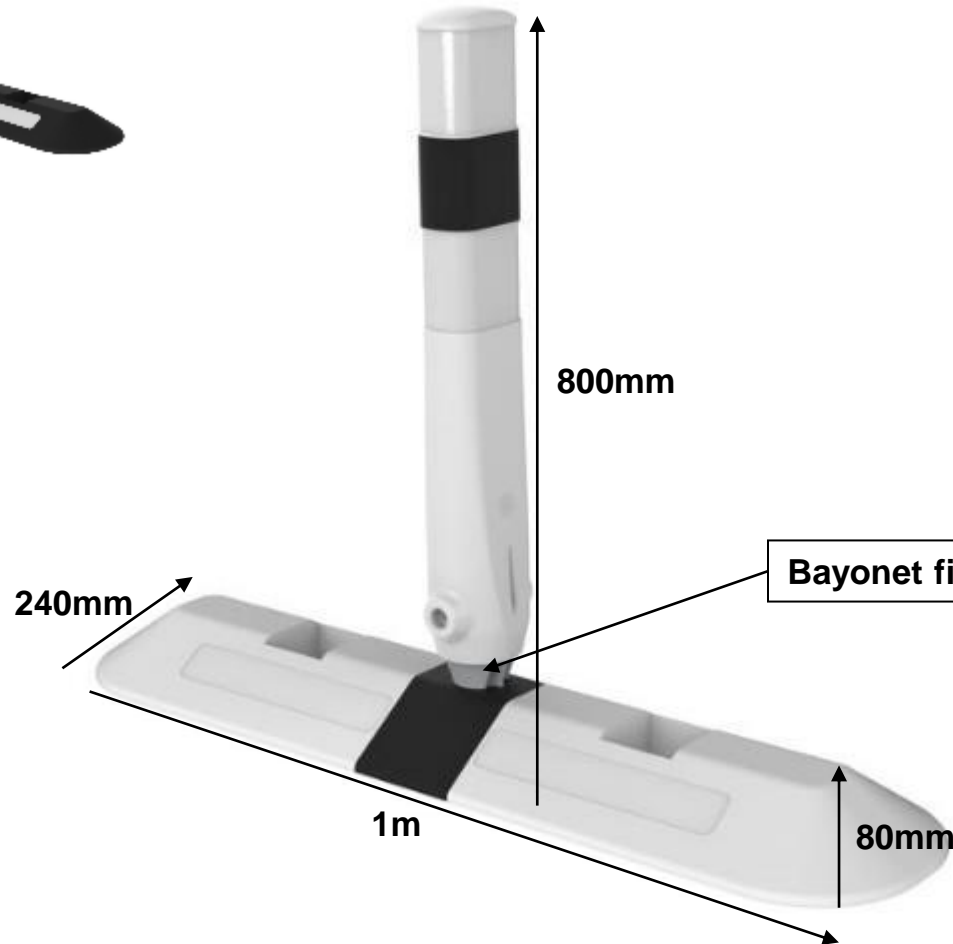
Cycle Lane Separator (CLS) Recycled Rubber Tyre Range

The information presented in this document is made available to the recipient for the sole purpose of product evaluation on the understanding and agreement that it is a confidential disclosure not to be communicated to any third party without prior written consent from Leaffield Environmental Limited. Leaffield Environmental Limited reserve their rights under the provisions of the Copyright, Designs and Patent Act in the respect of any misuse of this property.

Cycle Lane Separator (CLS) Recycled Rubber Tyre Products

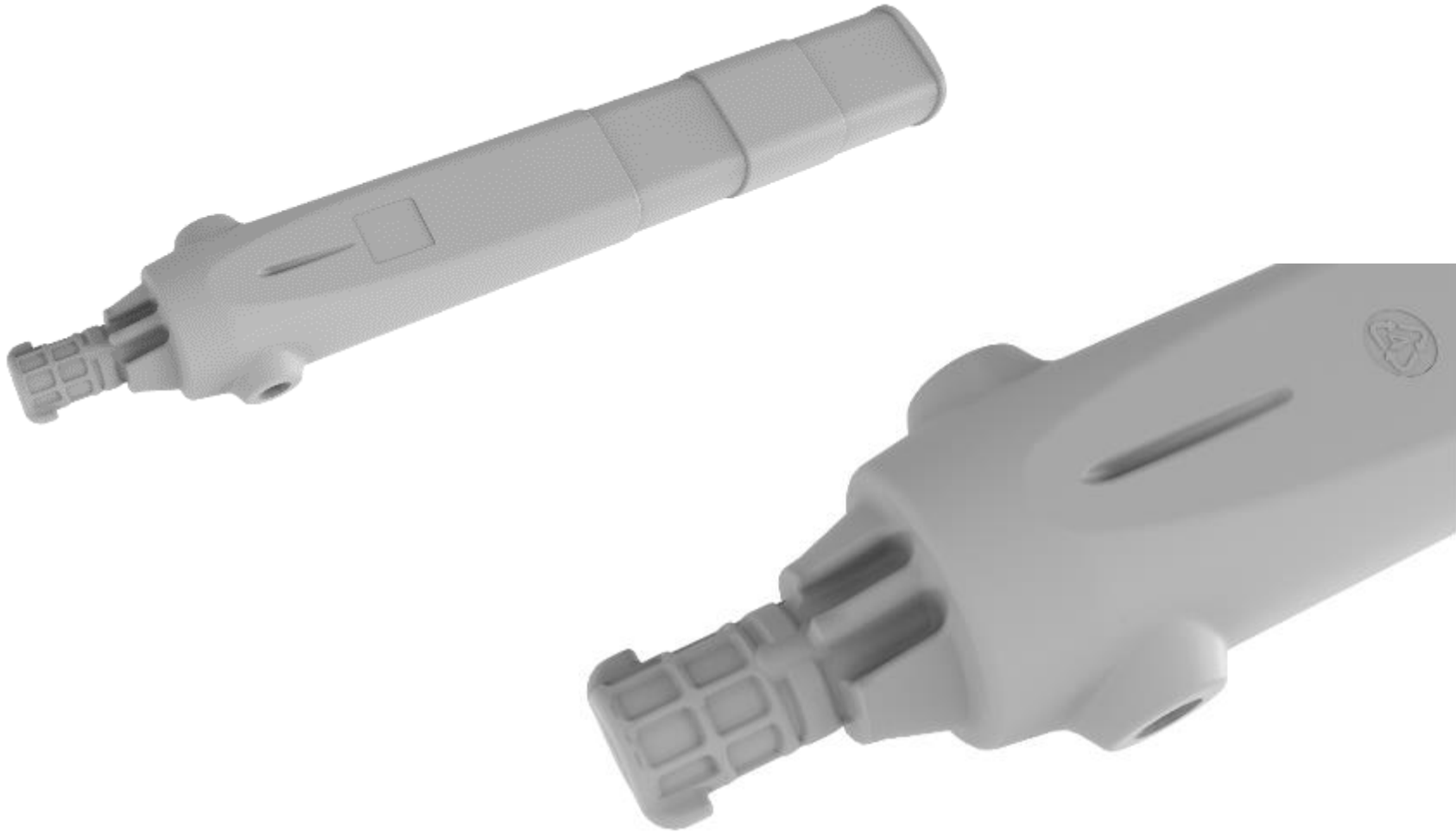
- 3 main products:
 - **CLS DB Edge**
 - 1m vulcanised rubber sections with bayonet CLS bollard fixing option to centre (either 800mm, 1000mm or 1030mm bollard stems)
 - **CLS Modular Edge**
 - 1m rubber 'jigsaw' style pieces for continuous segregation with bayonet bollard fixing options to centre of each section. Comprises of middle pieces and rounded end sections
 - **CLS Modular Splitter Edge**
 - Thicker rubber sections for substantial segregation at entry and exit gateways of schemes, for example near junctions/roundabouts

CLS DB Edge



Bayonet fixing of bollard stem to vulcanised rubber base

Bayonet Fitting



The information presented in this document is made available to the recipient for the sole purpose of product evaluation on the understanding and agreement that it is a confidential disclosure not to be communicated to any third party without prior written consent from Leaffield Environmental Limited. Leaffield Environmental Limited reserve their rights under the provisions of the Copyright, Designs and Patent Act in the respect of any misuse of this property.

Installation



1. The CLS DB Edge base is fixed using two 100mm bolts



2. Place base in intended area



3. Drill two guide holes using base as a template



4. Use a hammer to place the two plugs into the holes



5. Place base back on site lining up the holes



6. Screw the bolts into place

Installation (2)



7. Push the CLS bollard stem into bayonet insert



8. Twist clockwise to secure



9. Installation complete

*Please note the installation process is the same for the CLS DB Edge and CLS Modular Edge

The information presented in this document is made available to the recipient for the sole purpose of product evaluation on the understanding and agreement that it is a confidential disclosure not to be communicated to any third party without prior written consent from Leafield Environmental Limited. Leafield Environmental Limited reserve their rights under the provisions of the Copyright, Designs and Patent Act in the respect of any misuse of this property.

In situ photo – near Tynemouth, North Tyneside (CLS 800mm DB Edge)



The information presented in this document is made available to the recipient for the sole purpose of product evaluation on the understanding and agreement that it is a confidential disclosure not to be communicated to any third party without prior written consent from Leaffield Environmental Limited. Leaffield Environmental Limited reserve their rights under the provisions of the Copyright, Designs and Patent Act in the respect of any misuse of this property.

In situ photo – in Bathgate, West Lothian, Scotland (CLS 800mm DB Edge)



The information presented in this document is made available to the recipient for the sole purpose of product evaluation on the understanding and agreement that it is a confidential disclosure not to be communicated to any third party without prior written consent from Leaffield Environmental Limited. Leaffield Environmental Limited reserve their rights under the provisions of the Copyright, Designs and Patent Act in the respect of any misuse of this property.

In situ photo – in Bathgate, West Lothian, Scotland (CLS 800mm DB Edge)



The information presented in this document is made available to the recipient for the sole purpose of product evaluation on the understanding and agreement that it is a confidential disclosure not to be communicated to any third party without prior written consent from Leaffield Environmental Limited. Leaffield Environmental Limited reserve their rights under the provisions of the Copyright, Designs and Patent Act in the respect of any misuse of this property.

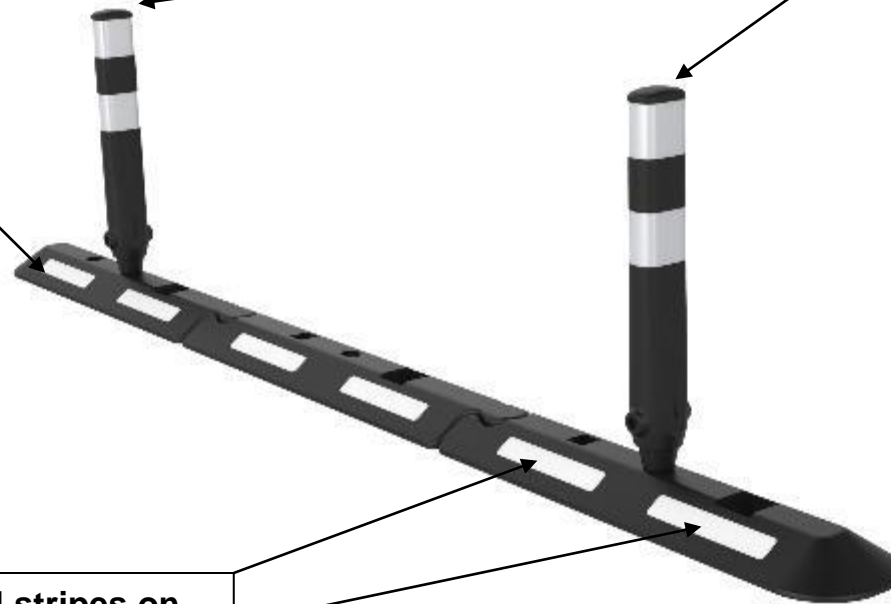
CLS Modular Edge

Dimensions per 1m Segment:

- 1m (length)
- 240mm (width)
- 80mm (height)

Bollard stem available in either 800mm or 1030mm height

X2 White 3m painted stripes on each side of each segment



CLS Modular Edge (Vulcanised Rubber 1m Modular 'Jigsaw' Strips)



The information presented in this document is made available to the recipient for the sole purpose of product evaluation on the understanding and agreement that it is a confidential disclosure not to be communicated to any third party without prior written consent from Leaffield Environmental Limited. Leaffield Environmental Limited reserve their rights under the provisions of the Copyright, Designs and Patent Act in the respect of any misuse of this property.



The information presented in this document is made available to the recipient for the sole purpose of product evaluation on the understanding and agreement that it is a confidential disclosure not to be communicated to any third party without prior written consent from Leaffield Environmental Limited. Leaffield Environmental Limited reserve their rights under the provisions of the Copyright, Designs and Patent Act in the respect of any misuse of this property.

London Borough of Camden Configuration (CLS Modular Edge)



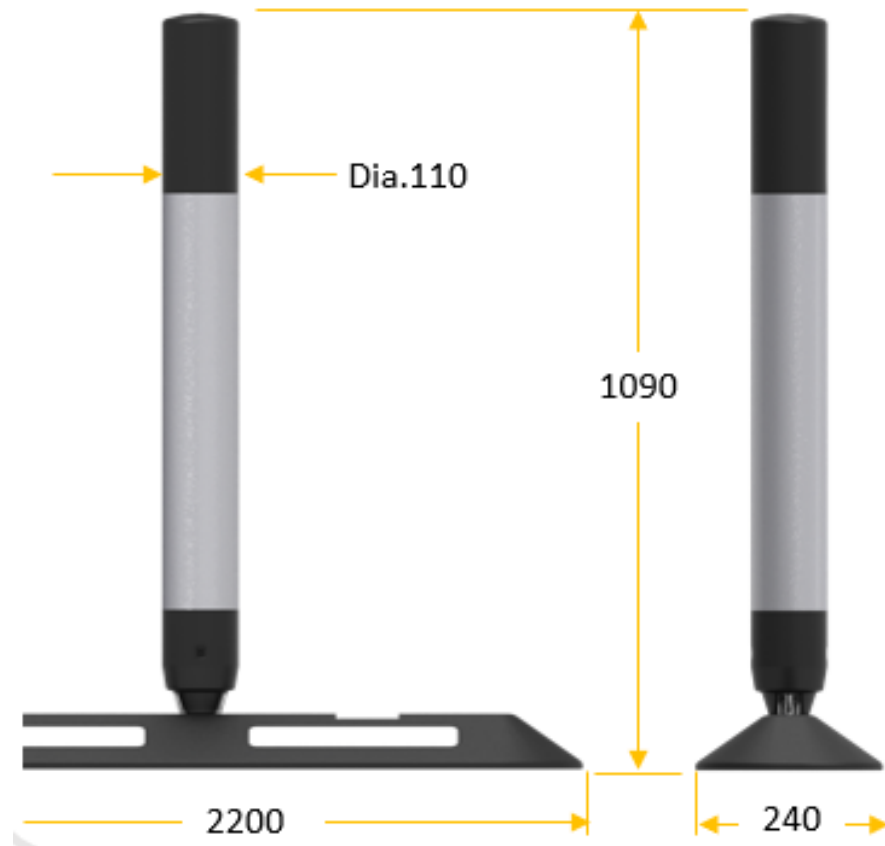
The information presented in this document is made available to the recipient for the sole purpose of product evaluation on the understanding and agreement that it is a confidential disclosure not to be communicated to any third party without prior written consent from Leaffield Environmental Limited. Leaffield Environmental Limited reserve their rights under the provisions of the Copyright, Designs and Patent Act in the respect of any misuse of this property.

In situ photos – Bathgate, West Lothian, Scotland – (CLS Modular Edge)



The information presented in this document is made available to the recipient for the sole purpose of product evaluation on the understanding and agreement that it is a confidential disclosure not to be communicated to any third party without prior written consent from Leafield Environmental Limited. Leafield Environmental Limited reserve their rights under the provisions of the Copyright, Designs and Patent Act in the respect of any misuse of this property.

Customer specific – Ayrshire Roads Alliance (CLS Modular Edge with TSRGD deflector)



The information presented in this document is made available to the recipient for the sole purpose of product evaluation on the understanding and agreement that it is a confidential disclosure not to be communicated to any third party without prior written consent from Leaffield Environmental Limited. Leaffield Environmental Limited reserve their rights under the provisions of the Copyright, Designs and Patent Act in the respect of any misuse of this property.

CLS Modular Splitter Edge

0.5m x 0.5m x 0.125m (per segment)



The information presented in this document is made available to the recipient for the sole purpose of product evaluation on the understanding and agreement that it is a confidential disclosure not to be communicated to any third party without prior written consent from Leaffield Environmental Limited. Leaffield Environmental Limited reserve their rights under the provisions of the Copyright, Designs and Patent Act in the respect of any misuse of this property.



The information presented in this document is made available to the recipient for the sole purpose of product evaluation on the understanding and agreement that it is a confidential disclosure not to be communicated to any third party without prior written consent from Leaffield Environmental Limited. Leaffield Environmental Limited reserve their rights under the provisions of the Copyright, Designs and Patent Act in the respect of any misuse of this property.

Leaffield Highways customer examples :

Balfour Beatty



Blackpool Council

Sainsbury's

SKANSKA



The information presented in this document is made available to the recipient for the sole purpose of product evaluation on the understanding and agreement that it is a confidential disclosure not to be communicated to any third party without prior written consent from Leaffield Environmental Limited. Leaffield Environmental Limited reserve their rights under the provisions of the Copyright, Designs and Patent Act in the respect of any misuse of this property.