



## Installation and Maintenance Instructions

### READ IN FULL BEFORE STARTING

## SAFETY

We recommend that the following minimum precautions are taken:

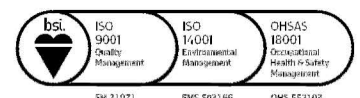
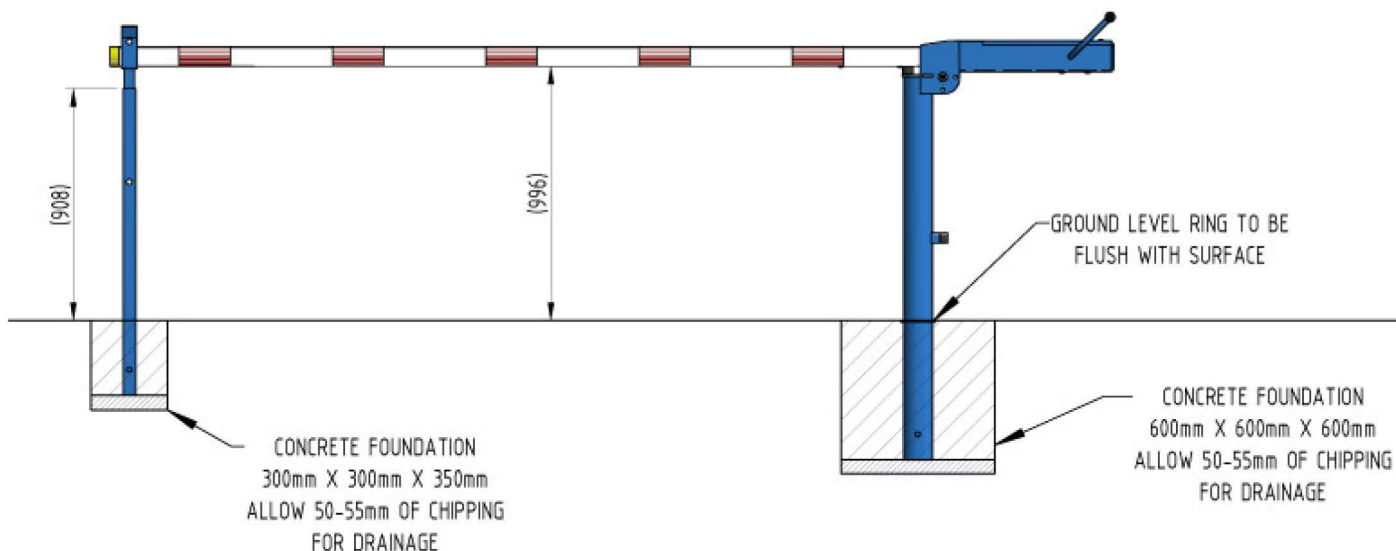
- Wear appropriate safety clothing including a safety helmet
- Eye and hand protection should be worn at all times during the build process
- Secure the site from pedestrian and vehicular access, where applicable, by the use of high visibility tape, barriers, cones, safety lamps, etc.
- If you use a power supply, ensure that it is secure and in a safe dry location
- Ensure that there are no underground services that may be affected
- When working at height a suitable platform should be used
- A MINIMUM OF TWO PERSONNEL ARE REQUIRED

## IMPORTANT INFORMATION

The Kingfisher 'Manual Arm Barrier' is design for ground fixing, either by bolting onto a suitable concrete surface, or by casting into concrete. The barrier can be locked in either the Open or Closed positions.

## Foundation Details

### Ragged

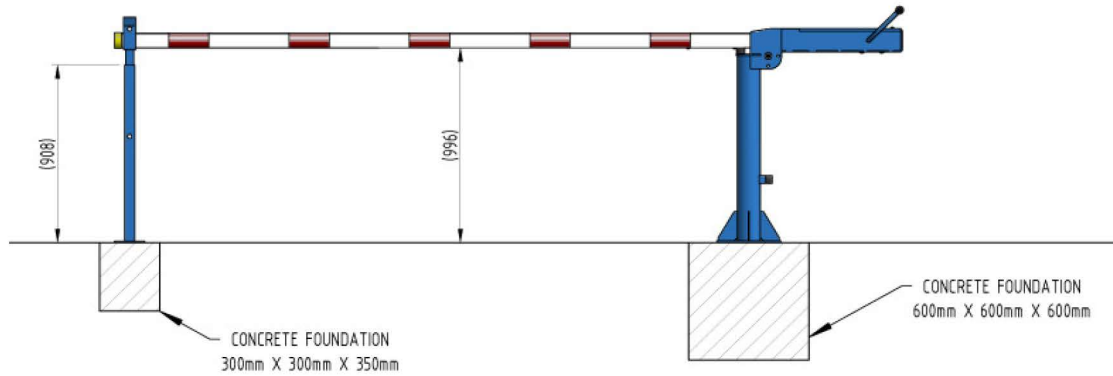


FM 11071

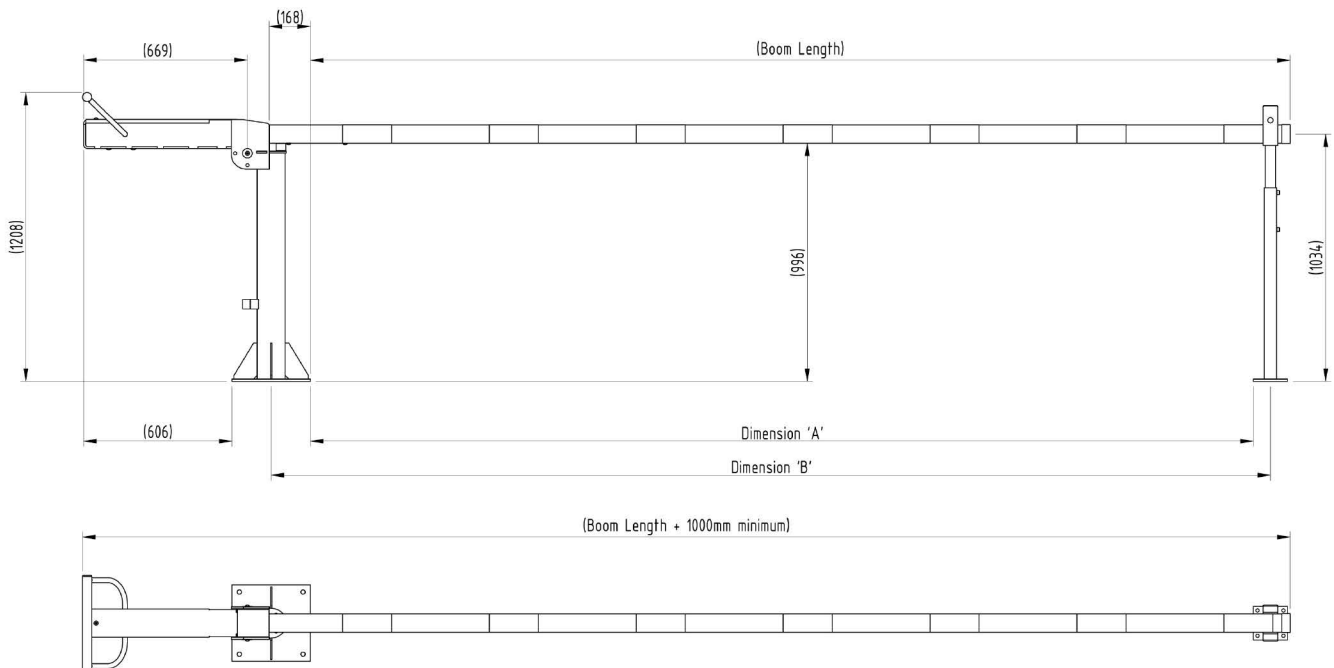
EMS 5631 66

OHS 552103

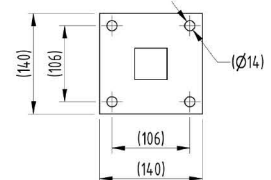
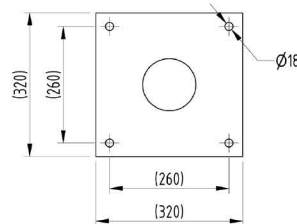
## Flanged



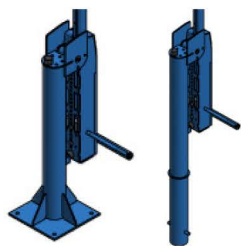
## Dimension Details



| Boom Length | Dimension 'A' | Dimension 'B' |
|-------------|---------------|---------------|
| 3m          | 2852mm        | 3082mm        |
| 3.5m        | 3352mm        | 3582mm        |
| 4m          | 3852mm        | 4082mm        |
| 4.5m        | 4352mm        | 4582mm        |
| 5m          | 4852mm        | 5082mm        |
| 5.5m        | 5352mm        | 5582mm        |
| 6m          | 5852mm        | 6082mm        |
| 6.5m        | 6352mm        | 6582mm        |
| 7m          | 6682mm        | 6912mm        |



## Parts List



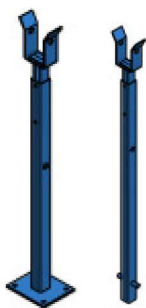
1 – Counter Balance Pedestal Assembly  
Quantity: 1 Flanged or Ragged



2 – Boom  
Quantity: 1



3 – M8 Security Fixing (Boom)  
Quantity: 2



4 – Catch Post  
Quantity: 1 Flanged or Ragged

## Tools Required

- Suitable Spanners or Sockets
- A 5mm Security Allen Key

## Maintenance

- Occasionally clean all surfaces with soap and water
- Check all fixing bolts and other visible fixings are tight and have not worked loose. Replace any missing fixings
- Check that the foundations remain firm

## Ground fixings are available as extra

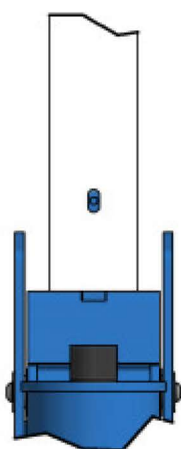
Catch Post  
4x M12 Foundations Bolts

Counter Balance Pedestal  
4x M16 Foundation Bolts

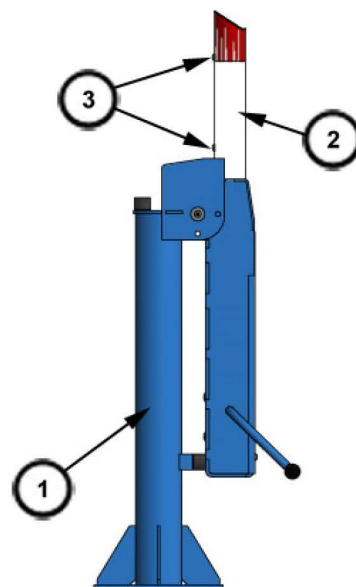


## **Installation Instructions** Note: Part numbers are shown in [ ]

1. Prepare the ground following the foundation details above
2. Position the Counter Balance Pedestal [1] as required ensuring that it is plum horizontally as well as vertically
3. Then fix the Flanged Counter Balance Pedestal [1] to the concrete pads using four M16 Foundation Bolts (Not Supplied) or concrete in the Ragged Counter Balance Pedestal [1] and allow the concrete to set
4. Ensure that the Counter Balance [1] is secured in the vertical position (open)
5. Slide the Boom [2] onto the Counter Balance [1], align the holes in the Boom [2] with those on the Counter Balance [1] and secure using two M8 Security Fixings [3]



**Boom Alignment**



6. Lower the Arm Barrier down to its horizontal position (closed)
7. Position the Catch Post [4] as required ensuring that it is plum horizontally as well as vertically
8. Then fix the Catch Post [4] to the concrete pads using four M12 Foundation Bolts (Not Supplied) or concrete in the Ragged Catch Post [4] and allow the concrete to set

**INSTALLATION COMPLETE**



## **Operating Instructions**

### **Opening of Barrier**

1. Remove locks (if applicable)
2. Apply pressure to the handle on the counter balance until the boom starts to rise.
3. Continue to apply pressure until the barrier is in the upright position, controlling the movement of the barrier at all times.

### **Closing of Barrier**

1. Remove lock (if applicable)
2. Using the handle, start to lift the counter balance (lowering the boom)
3. Continue to lift the counter balance until the barrier is in the horizontal position, controlling the movement of the barrier at all times.

## **HEALTH & SAFETY**

If the barrier is to be left in either the open or closed positions with no one in control then a padlock should be fitted to ensure that the barrier does not move of its own accord.

When opening and closing the barrier it is essential to control the movement and not to allow it to free fall.

