

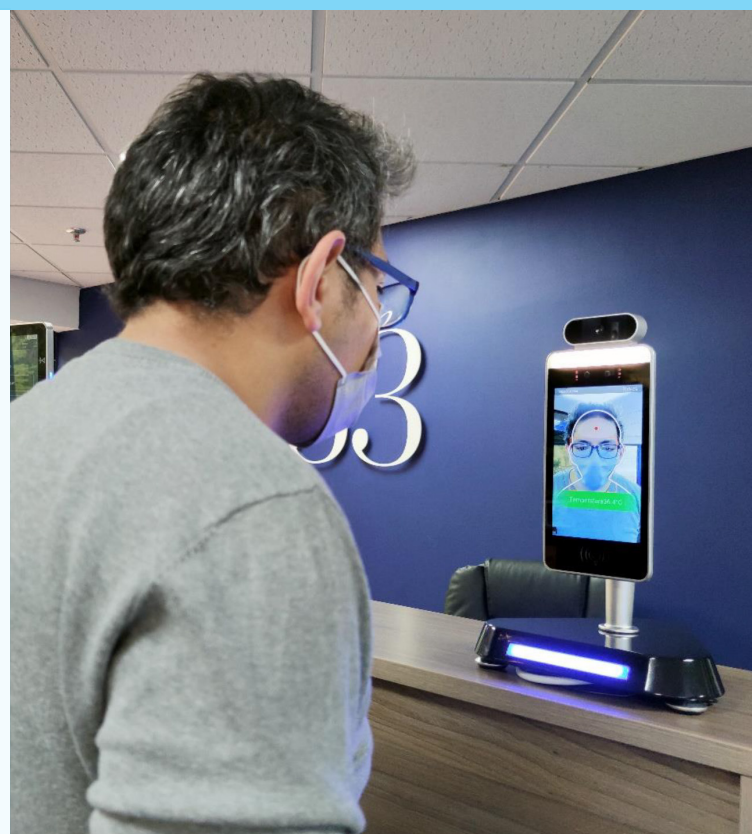
NON-CONTACT KIOSKS AUTOMATICALLY READ BODY TEMPERATURE IN SECONDS, WITH OPTIONAL FACIAL RECOGNITION.

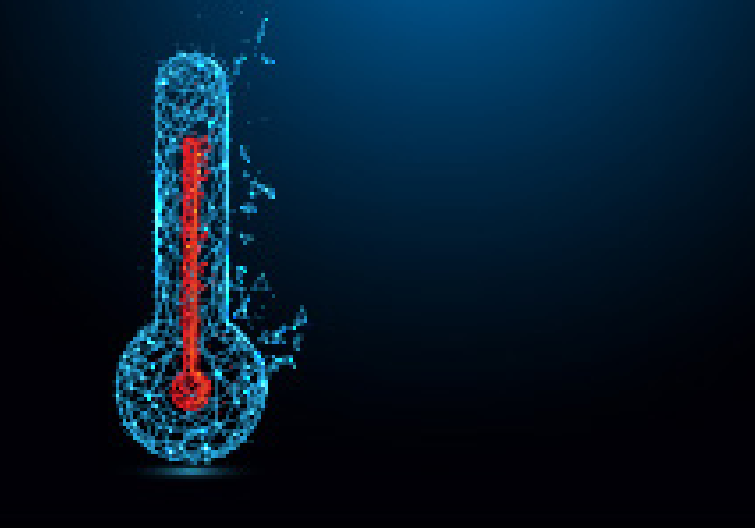
These kiosks are invaluable to help prevent virus spread and maintain a healthy environment for your employees, associates, visitors and the general public.

Vet staff members and the public before entry to public and private premises such as office buildings, manufacturing plants, healthcare settings, supermarkets, factories, transport hubs, schools, and hotels.

DURABLE, COMMERCIAL-GRADE HARDWARE

- 8-inch IPS full-view LCD display
- Commercial-grade, waterproof and dust-proof design which is stable and durable
- Built-in speakers provide verbal alerts including warnings for abnormal temperatures, and optional message for requesting that individuals wear a mask if they are not wearing one
- Supports various peripheral expansions such as ID card reader, fingerprint reader, IC card reader, two-dimensional code reader etc.
- Non-contact, fully automated kiosk
- Detects temperature of user standing in front of device
- Reads temperature in ~ 1 second
- Set your own acceptable temperature thresholds
- Integrate with gates, turnstiles and door access
- Verbal warning/success message plus LED traffic light
- Optional facial recognition to allow entry for vetted individuals and store regular readings





ACCURATE BODY TEMPERATURE DETECTION

- The kiosks support human body temperature detection and temperature display, with a marginal measurement error of $\pm 0.2^{\circ}\text{C}$ (0.3 Meter) from close range, and $\pm 0.5^{\circ}\text{C}$ from further away
- A distance of 0.5 meters is recommended for most accurate readings, with 1 meter being the longest distance at which temperature can be read
- It only takes a few seconds for detection and an alarm will sound automatically when temperature abnormality is detected - at a threshold set by you

SMART FACIAL RECOGNITION

- Industrial-grade binocular wide dynamic camera, night infrared and LED dual photo flood lamp
- Face recognition pass speed is ~ 1 second
- Database capacity for 30,000 faces
- Supports recognition and comparison of faces with surgical masks on
- The 1: 1 comparison recognition rate is more than 99.7%, the 1: N comparison recognition rate is more than 96.7% at a 0.1% misrecognition rate, and the live detection accuracy rate is 98.3% at a 1% mis rejection rate





SPECIFICATIONS

MODEL TEMPERATURE PASS MANAGEMENT MODULE & FACE RECOGNITION KIOSK LD-AITEMP-DEVICE		
Camera	Resolution Type Aperture Focusing distance White balance Photo flood light	2 million pixels Binocular wide dynamic camera F2.4 50-150cm Auto LED and IR dual photo flood light
Screen	Size Resolution Touch	8.0 inch IPS LCD screen 800×1280 Not supported (optional)
Processor	CPU Storage	RK3288 quad-core (optional RK3399 sixcore, MSM8953 eight-core) EMMC 8G
Interface	Network module Audio USB Serial communication Relay output Wiegand Upgrade button Wired network	Ethernet and wireless (WIFI) 2.5W / 4R speakers 1 USB OTG, 1 USB HOST standard A port 1 RS232 serial port 1 door open signal output One Wiegand 26/34 output, one Wiegand 26/34 input Support Uboot upgrade button 1 RJ45 Ethernet socket
Function	Credit card reader Face Detection Face library 1: N face recognition 1: 1 face comparison Stranger detection Identify distance configuration UI interface configuration Upgrade remotely Interface	None (optional IC card reader, ID card, ID card) Supports detection and tracking of multiple people at the same time Up to 30,000 Support Support Support Support Support Support Interfaces include device management, personnel / photo management, record query



SPECIFICATIONS

MODEL	TEMPERATURE PASS MANAGEMENT MODULE & FACE RECOGNITION KIOSK LD-AITEMP-DEVICE	
Function	Deployment method	Support public cloud deployment, privatized deployment, LAN use, stand-alone use
	Alert feature (coming soon)	Email notifications upon readings.
Infrared Thermal Imaging Module	Temperature detection Temperature detection distance Temperature error rate Temperature measurement range Thermal field of view Visitor's temperature is normal and released directly Abnormal temperature Support (temperature alarm value can be set) alarm	Support 1 meter (optimal distance 0.5 meter) $\leq \pm 0.5, +_0.9 F$ $10^{\circ}C \sim 42^{\circ}C$ 32 X 32 Degrees Support Support (temperature alarm value can be set)
General Parameters	Power Operating temperature Storage temperature Power consumption Installation method	DC12V ($\pm 10\%$) $0^{\circ}C \sim 60^{\circ}C$ $-20^{\circ}C \sim 60^{\circ}C$ 13.5W (Max) Screwed by wall mount bracket Standard: 274.24*128*21.48 (mm)

MOUNTING OPTIONS

Surface/Desk Mount

You may choose to mount the device onto an existing surface, select a desk stand or a freestanding floor stand.



Turnstile Integration

Integrate the device with turnstile access using our dry relay connection, to allow access to visitors or staff that pass the acceptable temperature threshold.

WIRE INTERFACE DEFINITION



RELAY

TERMINAL ELECTRICAL DEFINITION

Pin 1
Pin 1

COM
NO

WIEGAND INPUT

TERMINAL ELECTRICAL DEFINITION

Pin1
Pin2
Pin3

D0_OUT
D1_OUT
GND

WIEGAND INPUT

TERMINAL ELECTRICAL DEFINITION

Pin1
Pin2
Pin3
Pin4

D0_IN
D1_IN
12V
GND

232 SERIAL PORT

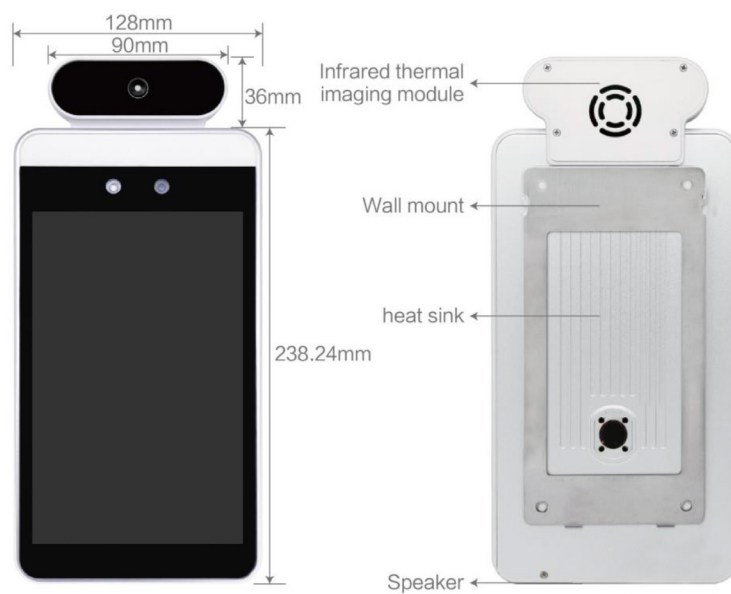
TERMINAL ELECTRICAL DEFINITION

Pin1
Pin2
Pin3

232_RX1
232_TX1
GND

TECHNICAL DRAWINGS

Standard Model



IC/ID Card Model

